

# “World’s Largest Court House Selects IDTECK”

**■ Location :**

Kartal Court House  
Istanbul, Turkey

**■ Products Used :**

iMDC Control Panel – Main Board  
iMDC Control Panel – RIM Board  
SR10 13.56MHz SMART Card Reader  
ENTERPRISE Management S/W  
(Server / Client)

**■ Application :**

Access Control & Integrated Security  
Management

**iMDC**

- 32 Door Access Control Panel
- Up to 200,000 Users
- Up to 200,000 Event Buffers
- Max. 128 Inputs & 128 Outputs
- System Expandable by Adding RIM-Boards
- Automatic System Reset Function

## Turkish Court House

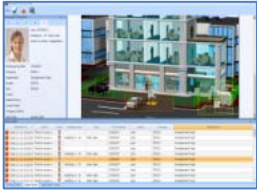
Soon to be known as the world’s largest court house complex, the Kartal Court House will be built along the E5 Highway of Istanbul, Turkey. This enormous 340,000 m<sup>2</sup> building will house 350 hearing rooms, 12 police station, waiting room for prisoners as well as facilities for the public such as banks, sports hall, restaurant, doctor’s offices, post office, hair dresser, nursery and etc. Over 5,000 personnel are expected to be employed in this complex and thousands of visitors are expected to visit the site on daily basis.

## Project Requirement

The responsibility of the security division of the Kartal Court House encompasses a wide area of concern. The division will be charged with the duty of ensuring the security of the courtrooms, potentially a very volatile place with intense atmosphere. All premises of the court house as well as other public facilities in the complex call for total security management, which allows the security division to take immediate action or respond to any unexpected events that may occur in the site. Due to its mass size of the complex, there is definite limit in keeping watch over the whole area with security division’s limited staffing and manpower. Therefore, the security division required a dependable and reliable security system to assist them in providing safe and secure environment for all.

## The Solution

The fact of the matter is that there aren’t many security products out in the current market that are designed to manage large scale sites such as the Kartal Court House. One of the IDTECK’s latest innovations, iMDC Access Control Panel in sync with its designated access control and total security management software, STARWATCH ENTERPRISE, has chosen to be the perfect solution for the newly built court house as the system was solely designed to serve large businesses and its mass scale facilities. iMDC Main Board boasts 32 door management capability as 16 iMDC RIM (Remote Interface Module) Boards, which controls 2 doors distinctively, can be



## STARWATCH ENTERPRISE

- Professional Access Control Management Software
- Fault Tolerant System Applied
- Multi-Site Management
- Integrated Monitoring Features
- Enhanced System Security



## Optimum Güvenlik

Optimum Güvenlik (exclusive distributor of IDTECK products in the nation of Turkey) won the contract thanks to the top performance of IDTECK products as well as providing maximum service quality, excellent technical support and paying close attention to all customer requests, reacting to them on time and in step with their requirements.

connected to the iMDC Main Board. Total of 14 units of iMDC Main Boards and 212 units of iMDC RIM Boards will be implemented to control 375 units of SR10, 13.56 MHz Contactless Smart Card Readers in the premises of the site to secure all the entry and exit points of the court house facility.

STARWATCH ENTERPRISE management software will maximize the security level of the court house as the system allows integrations with various security devices such as CCTV, Alarm, Fire Alarm, and BMS/BAS. With this multi-functional management system on board, the security division of the court house will be allowed to perform various monitoring such as integrated monitoring with map and CCTV playback in single screen, personal tracking, In-Room monitoring and other types of monitoring from the central monitoring room.

## Expected Effectiveness of the System

The chief administrator of the security division of the Kartal Court House has mentioned that the one of the reasons behind choosing IDTECK products over name brand products was mainly focused on its product stability. IDTECK's system is designed to provide round the clock protection 24/7, 365 days a year without failure due to its fault-tolerant system as the system automatically switches to the spare system (standby) if the main system in operation fails. Since the system is reliable and literally fault tolerant, it does not require a lot of maintenance attention so that the staffs of the security division can pay more attentions in other security matters. The chief administrator also emphasized on the importance of choosing the right kind of security system that meets the requirements of the site; "When it comes to security for place like this, it's far less expensive and more satisfying to be safe and being sorry".

## About IDTECK

Long experience in biometric access control and time & attendance field, IDTECK products assure the most reliable technology out in the security market. IDTECK offers wide range of security products, to provide the best security solution to suit your needs. All of IDTECK products are certified by UL, CE, FCC, MIC, and RoHS to satisfy the standards for international exports.